

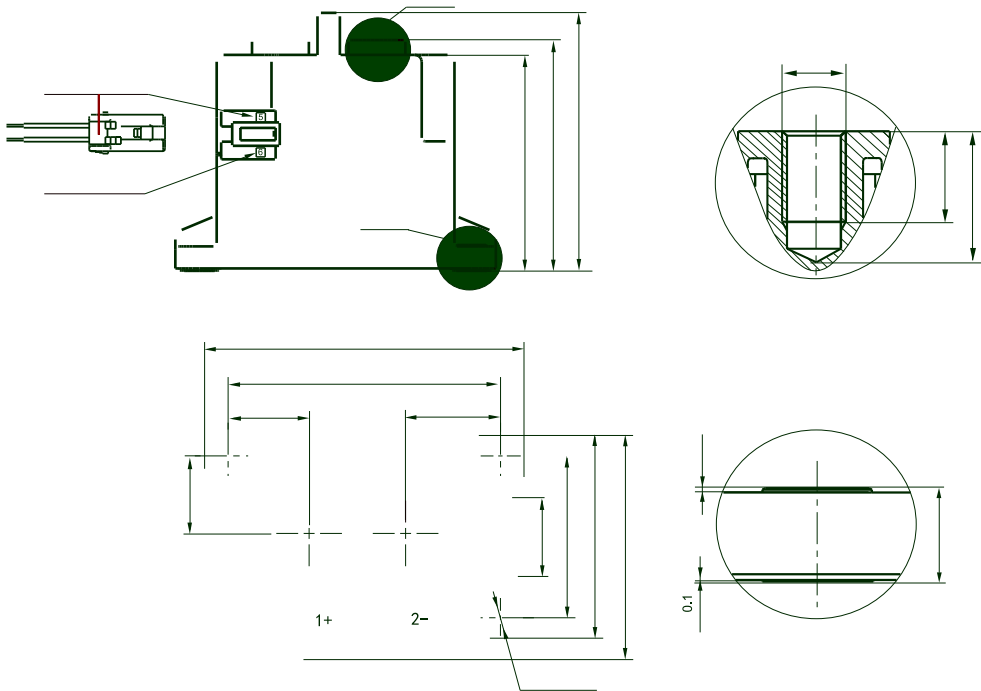
IP6K9K

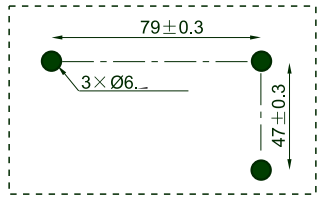
触点参数 / Contact parameters

		$I_a$					
		$\leq 0.5m\Omega$ (at 300A)					
		300A					
		$2 \times 10^{-5}$					
		450V型		750V型			
		1000VDC		1000VDC			
		2500A(320VDC)1		2500A(320VDC)1			
		135kW		225kW			
1)		$2.5 \times 10^4$	22.5VDC, =1ms	400A, 300A	$1.5 \times 10^4$	37.5VDC, =1ms	400A, 300A
	1		360VDC, =1ms	1350A, 300A			
			$1 \times 10^4$	450VDC,80A		$1 \times 10^4$	750VDC,80A
			$3 \times 10^3$	450VDC,300A		$1 \times 10^3$	750VDC,300A
2)		300A:					
		450A:60min					
		600A:20min					
		1200A:30s					
		3000A:0.6s					

1) 85°C, 23°C, 0.6s:5.4s,

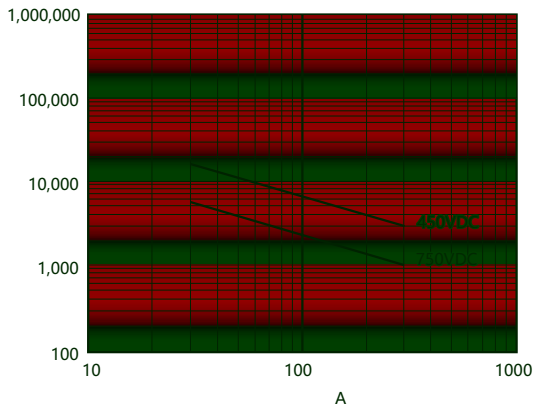
2) 85°C, 100 mm<sup>2</sup>, " "



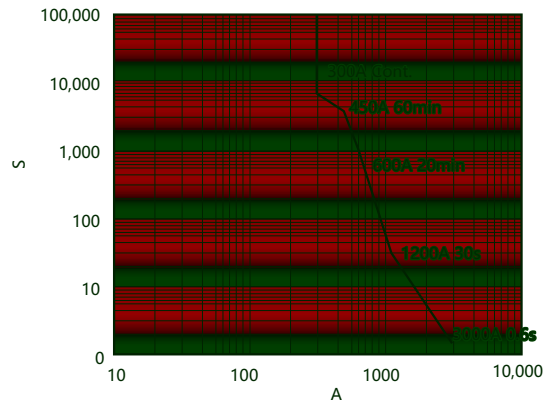


性能曲线图 Performance graph

Electrical life curve



Tolerance curve



/ 0.6S 5.4S

85°C , 100mm<sup>2</sup>



使用注意事项 Precautions for use

1 9N·m~11N·m。 M5 3N·m~4N·m

M6螺钉	9N·m~11N·m	Ø6.0~Ø6.5mm	5mm	M5螺钉	3N·m~4N·m
------	------------	-------------	-----	------	-----------

2 100mm<sup>2</sup>  
3 0.2s 0.2s  
4  
5 3mm



声明/Statement:

1.  
2.