



产品特性/Product Features

- IP6K9K
- 80A 85°C
- 12-750VDC
- 1000MΩ (1000VDC) , IEC 60664-1

触点参数 / Contact parameters

		1a	
		≤1m (at 20A)	
		80A	
		2×10 ⁻⁵	
		450V型	750V型
		1000VDC	1000VDC
		800A(320VDC)1	800A(320VDC)1
		36kW	60kW
1)	23°C,	1×10 ⁻⁴ 450VDC, 80A	1×10 ⁻⁴ 750VDC, 80A
		7.5×10 ⁻⁴ 450VDC, 80A	7.5×10 ⁻⁴ 450VDC, 80A
2)	85°C,	80A:	
		120A:30min	
		160A:1min	
		300A:10s	

1) 23°C, 0.6s:5.4s,

2) 85°C, 20 mm², 1000VDC, 1000A, 1000000次

性能参数 / Performance parameters

		1000MΩ(1000VDC)
		3000VAC 1min
		3000VAC 1min
()		≤30ms
()		≤10ms
		196m/s ²
		490m/s ²
		10Hz ~ 500Hz 49m/s ²
		5% ~ 85%RH
		-40°C ~ 85°C
		5M
		225g

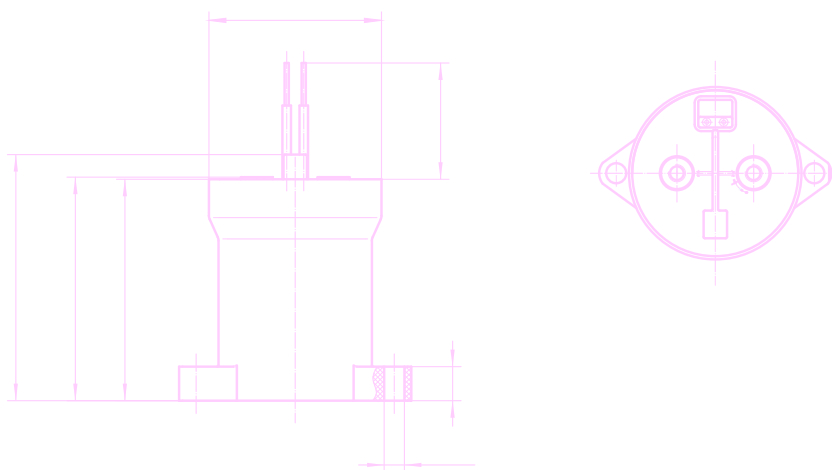
线圈参数 / Coil parameters

VDC	VDC	VDC	W
12	9	1.2	5.5W
24	≤18	2.4	6W

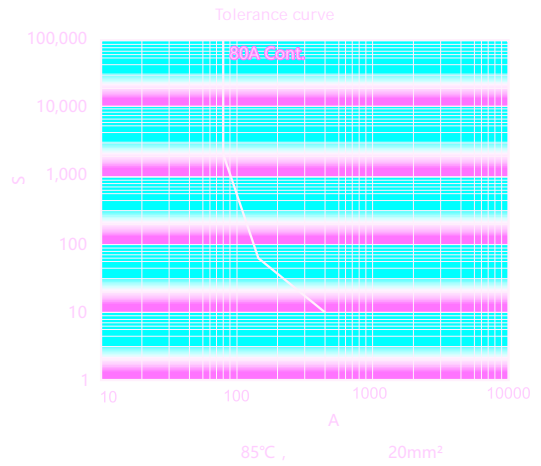
-40°C ~ 85°C)

外形图、安装孔尺寸 / Outline drawing, mounting hole size

/Unit mm



性能曲线图 Performance graph



使用注意事项 Precautions for use

1

M5		M8		M10	
3N·m~4N·m	Ø5.0~Ø5.5mm	3mm	3mm	M4螺钉	3N·m~4N·m
10N·m~12N·m	Ø5.0~Ø5.5mm	3mm	3mm	M4螺钉	3N·m~4N·m

2

20mm²

3

3mm



声明/Statement:

1.

2.

